

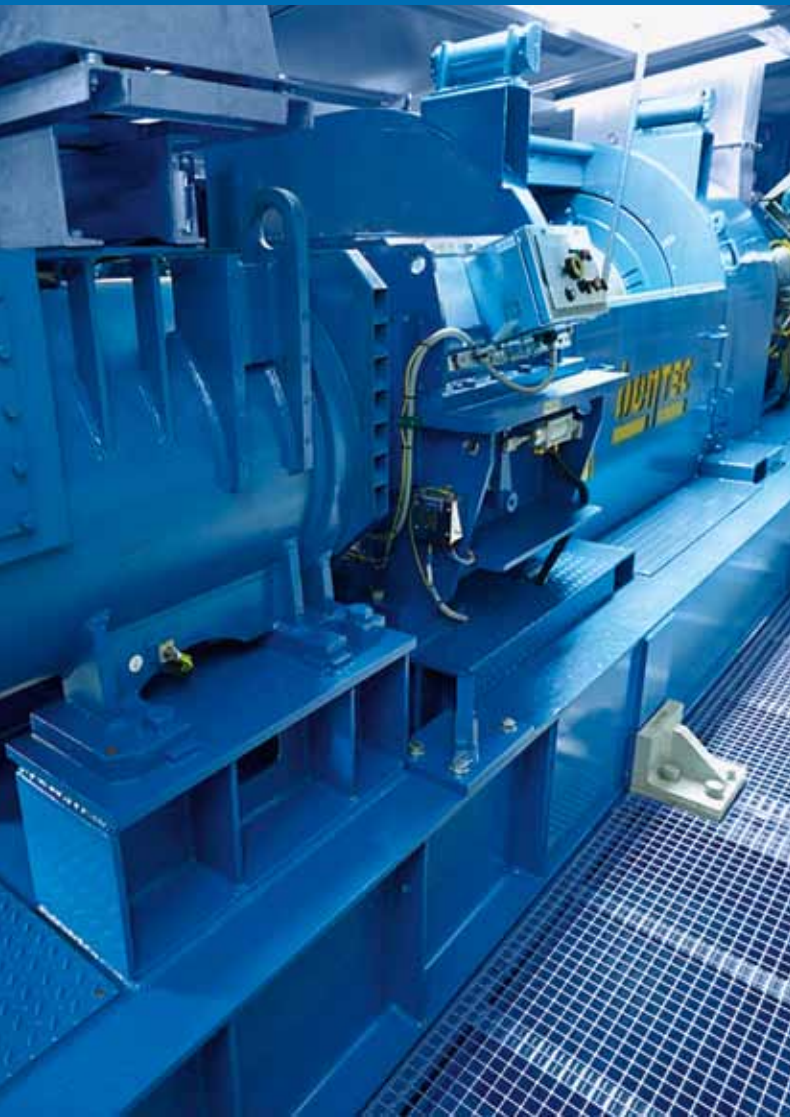
GEAR-DRIVEN DRAWWORKS

Bentec gear-driven drawworks are modular, lightweight, small-dimensioned, quiet and easy to maintain.

Suitable for onshore or offshore applications. Available with Bentec Feed-Off Control System.

GEAR-DRIVEN DRAWWORKS GENERAL FEATURES

- Control system for safe operation
- Temperature-controlled blowers reduce noise level
- No hydraulics
- No water
- Air-operated spring set disc brake (failsafe)
- Local control panel for safe cut and slip operation
- Components manufactured according to API 7K
- CE conformity
- ATEX conformity on request



UNIQUE FEATURES

TWO-SPEED DRAWWORKS

- Air-cooled eddy current brake

SINGLE-SPEED DRAWWORKS

- No eddy current brake
- Single-speed gearbox for small footprint and reduced weight

TECHNICAL DATA

GEAR-DRIVEN DRAWWORKS

The Bentec GEAR-DRIVEN DRAWWORKS were developed to provide the market with more reliable technology and more hoisting performance. Their light weight and small dimensions make them ideal for frequent rig moves or limited offshore crane capacity. Due to our decades of experience in designing and manufacturing drilling equipment, the Bentec GEAR-DRIVEN DRAWWORKS are equipped with modern AC or DC motor technology developed in-house.

Bentec also reduces the number of sensors to a useful level. The Bentec GEAR-DRIVEN DRAWWORKS need only electrical power and air. No water or hydraulics are necessary, which simplifies the drawworks significantly. Bentec provides many drawworks solutions to meet our customers' requirements for rigs, whether existing or newly built.

All of these advantages make the Bentec GEAR-DRIVEN DRAWWORKS the best choice. A drawworks is just a winch – but equipped with modern and reliable technology, it offers the best performance.

TECHNICAL DATA TWO-SPEED

Model:	E-1250-AC & E-1250-DC	E-1500-AC	E-1500-DC	E-2000-AC	E-2000-DC	E-3000-AC
Power rating in hp (kW):	1,250 (920)	1,500 (1,100)	1,500 (1,100)	2,000 (1,470)	2,000 (1,470)	3,000 (2,200)
Max. hook load:						
8 lines in lbs (t)	540,000 (245)	626,000 (284)	600,000 (272)			
10 lines in lbs (t)	668,000 (303)	776,000 (352)	740,000 (336)	926,000 (420)	840,000 (381)	
12 lines in lbs (t)		922,000 (418)	882,000 (400)	1,102,000 (500)	1,000,000 (453)	1,525,000 (692)
14 lines in lbs (t)				1,274,000 (578)	1,153,000 (523)	1,762,000 (799)
16 lines in lbs (t)						1,995,000 (904)
Wireline size in inches (mm):	1 1/4 (32)	1 3/8 (35)	1 3/8 (35)	1 1/2 (38)	1 1/2 (38)	1 3/4 (45)
Max. wireline speed in ft/s (m/s)	51.8 (15.8)	59 (18)	59 (18)	59 (18)	59 (18)	57.7 (17.6)
Hoisting drum size in inches (mm):	29 1/2 x 67 1/2 (750 x 1,716)	33 3/8 x 71 3/4 (846 x 1,824)	33 3/8 x 71 3/4 (846 x 1,824)	33 3/8 x 71 3/4 (846 x 1,824)	33 3/8 x 71 3/4 (846 x 1,824)	39 x 71 3/4 (990 x 1,824)
Disc brake:	2-plate 48"	3-plate 48"	3-plate 48"	3-plate 48"	3-plate 48"	4-plate 60"
Electromagnetic brake:	EB-5032 Air cooled	EB-6032 Air cooled	EB-6032 Air cooled	EB-6032 Air cooled	EB-6032 Air cooled	EB-6032 Air cooled
Hoisting speeds:	2	2	2	2	2	2
Length in ft & in (mm):	23' 7 1/2" (7,200)	25' 1 1/8" (7,650)	25' 1 1/8" (7,650)	25' 1 1/8" (7,650)	25' 1 1/8" (7,650)	28' 6 1/2" (8,700)
Width in ft & in (mm):	9' 9 1/2" (2,985)	9' 9 1/2" (2,985)	9' 9 1/2" (2,985)	9' 9 1/2" (2,985)	9' 9 1/2" (2,985)	10' 6" (3,200)
Height in ft & in (mm):	11' 1/4" (2,800)	9' 1/4" (2,750)	9' 1/4" (2,750)	9' 1/4" (2,750)	9' 1/4" (2,750)	10' 4" (3,150)
Weight in lbs (t):	83,775 (38)	97,000 (44)	97,000 (44)	99,200 (45)	99,200 (45)	132,280 (60)

TECHNICAL DATA SINGLE-SPEED

Model:	E-200-AC-SG	E-250-AC-SG	E-300-AC-SG	E-350-AC-SG	E-450-AC-SG
Power rating in hp (kW):	1,000 (735)	1,250 (920)	1,250 (920)	1,500 (1,100)	2,000 (1,470)
Max. hook load:					
8 lines in mt (lbs)	357,150 (162)	445,300 (202)	533,500 (242)	566,600 (257)	
10 lines in mt (lbs)	440,925 (200)	551,200 (250)	661,400 (300)	701,100 (318)	831,100 (377)
12 lines in mt (lbs)				833,400 (378)	1,000,900 (454)
14 lines in mt (lbs)					1,155,200 (524)
Wireline size in inches (mm):	1 1/8 (28)	1 1/4 (32)	1 1/4 (32)	1 3/8 (35)	1 1/2 (38)
Max. wireline speed in ft/s (m/s):	40.7 (12.5)	40.7 (12.5)	40.7 (12.5)	46.2 (14.1)	46.2 (14.1)
Hoisting drum size in inches (mm):	29 1/2 x 67 1/2 (750 x 1,716)	29 1/2 x 67 1/2 (750 x 1,716)	29 1/2 x 67 1/2 (750 x 1,716)	33 3/8 x 71 3/4 (846 x 1,824)	33 3/8 x 71 3/4 (846 x 1,824)
Disc brake:	2-plate 48"	2-plate 48"	2-plate 48"	3-plate 48"	3-plate 48"
Electromagnetic brake:	none	none	none	none	none
Hoisting speeds:	1	1	1	1	1
Length in mm (ft & in):	18' 4 1/2" (5,600)	18' 4 1/2" (5,600)	18' 4 1/2" (5,600)	18' 10 3/4" (5,760)	19' 5 1/4" (5,925)
Width in mm (ft & in):	9' 9 1/2" (2,985)	9' 9 1/2" (2,985)	9' 9 1/2" (2,985)	9' 9 1/2" (2,985)	9' 9 1/2" (2,985)
Height in mm (ft & in):	8' 10 3/8" (2,700)	8' 10 3/8" (2,700)	8' 10 3/8" (2,700)	9' 7" (2,920)	9' 7" (2,920)
Weight in mt (lbs):	66,140 (30)	66,140 (30)	66,140 (30)	78,900 (32)	77,200 (35)